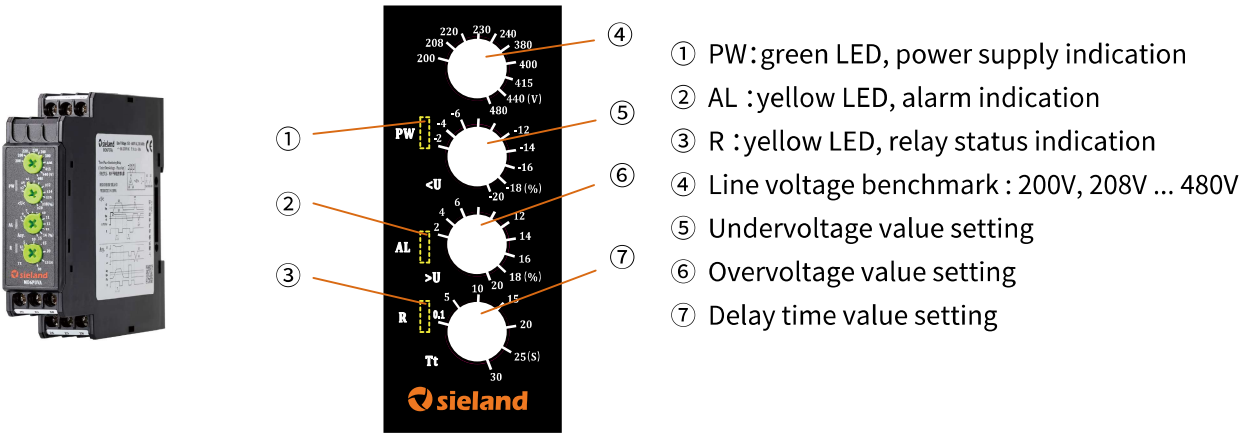


# MD6PUV-X 2P Two-phase monitoring relays specification



- ① PW: green LED, power supply indication
- ② AL :yellow LED, alarm indication
- ③ R :yellow LED, relay status indication
- ④ Line voltage benchmark : 200V, 208V ... 480V
- ⑤ Undervoltage value setting
- ⑥ Overvoltage value setting
- ⑦ Delay time value setting

Shanghai Sieland Electric Co., Ltd

## Products features:

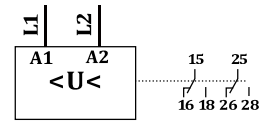
- Monitoring self-power supply
- Undervoltage、 overvoltage
- Line voltage benchmark : 200V, 208V, 220V, 230V, 240V, 380V, 400V, 415V, 440V, 480V
- Off delay mode

## Technical data:

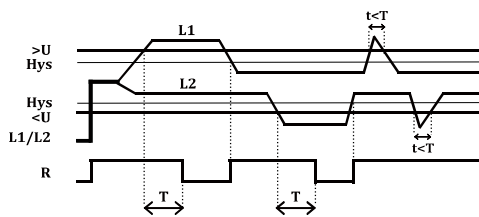
Rated voltage:	150 - 600V AC, 50/60 Hz (line voltage)
Undervoltage:	-2% ... -20% (line voltage)
Overvoltage:	2% ... 20% (line voltage)
Time delay:	0.1s - 30s
Relay output:	2 c/o
Repeatability:	±0.5%
Temperature drift:	±0.05%/°C
Voltage drift:	±1%/V
Relay capacity:	8A/250VAC
Electrical durability:	10 <sup>5</sup> cycles
Mechanical durability:	10 <sup>7</sup> cycles
IP degree:	IP50/IP20
Operation temperature:	-40°C...60°C
Storage temperature:	-40°C...85°C
Width:	22.5 mm
Height:	92 mm
Length:	100 mm
Mounting:	35mm DIN rail
Standards:	IEC60255-1、GB14048.5

Reference figure for MD6PUV-X 2P:

**T: 0.1s-30s**  
**Line voltage: 150-600V 50/60 Hz**  
 ~ : **8A 250V AC**



Under-over voltage function:



Example:

■ Equipment protect for two-phase line voltage benchmark 380V product

Setting:

<U: -10%  
 >U: 10%  
 Tt: 5s

Accordingly:

<U value:  $380 - 380 \times 10\% = 342V$   
 >U value:  $380 + 380 \times 10\% = 418V$

Conclusion:

When voltage is between 342V and 418V, voltage is normal, relay c/o switch on, led R turn on, led AL turn off

When voltage is over 418V, overvoltage fault occur, if the fault last for 5s, relay c/o switch off, led R turn off, led AL fast flash

When voltage is under 342V, undervoltage fault occur, if the fault last for 5s, relay c/o switch off, led R turn off, led AL slow flash