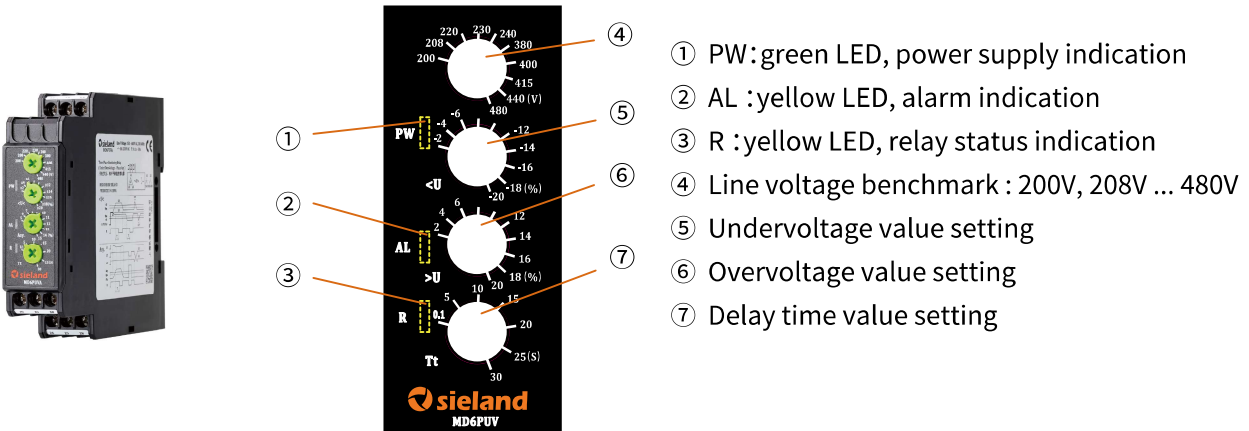


MD6PUV Three-phase monitoring relays specification



- ① PW: green LED, power supply indication
- ② AL :yellow LED, alarm indication
- ③ R :yellow LED, relay status indication
- ④ Line voltage benchmark : 200V, 208V ... 480V
- ⑤ Undervoltage value setting
- ⑥ Overvoltage value setting
- ⑦ Delay time value setting

Products features:

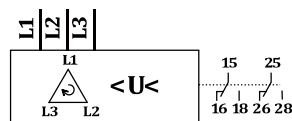
- Monitoring self-power supply
- Phase sequence / absence、 undervoltage、 overvoltage
- Line voltage benchmark : 200V, 208V, 220V, 230V, 240V, 380V, 400V, 415V, 440V, 480V
- Off delay mode

Technical data:

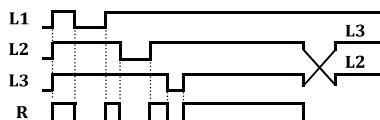
Rated voltage:	150 - 600V AC, 50/60 Hz (line voltage)
Undervoltage:	-2% ... -20% (line voltage)
Overvoltage:	2% ... 20% (line voltage)
Time delay:	0.1s - 30s
Relay output:	2 c/o
Repeatability:	±0.5%
Temperature drift:	±0.05%/°C
Voltage drift:	±1%/V
Relay capacity:	8A/250VAC
Electrical durability:	10 ⁵ cycles
Mechanical durability:	10 ⁷ cycles
IP degree:	IP50/IP20
Operation temperature:	-40°C...60°C
Storage temperature:	-40°C...85°C
Width:	22.5 mm
Height:	92 mm
Length:	100 mm
Mounting:	35mm DIN rail
Standards:	IEC60255-1、GB14048.5

Reference figure for MD6PUV:

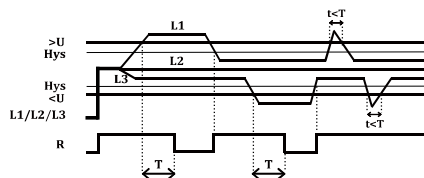
T: 0.1s-30s
Line voltage: 150-600V 50/60 Hz
 ~ : **8A 250V AC**



Phase sequence / absence function:



Under/over voltage function:



Example:

■ Equipment protect for line voltage benchmark 380V product

Setting:

<U: -10%

>U: 10%

Tt: 5s

Accordingly:

<U value: $380 - 380 \times 10\% = 342V$

>U value: $380 + 380 \times 10\% = 418V$

Conclusion:

When voltage is between 342V and 418V, voltage is normal, relay c/o switch on, led R turn on, led AL turn off

When voltage is over 418V, over voltage fault occur, if the fault last for 5s, relay c/o switch off, led R turn off, led AL fast flash

When voltage is under 342V, under voltage fault occur, if the fault last for 5s, relay c/o switch off, led R turn off, led AL slow flash

When phase sequence/phase loss fault occur, relay c/o switch off immediately, led R turn off, led AL turn on