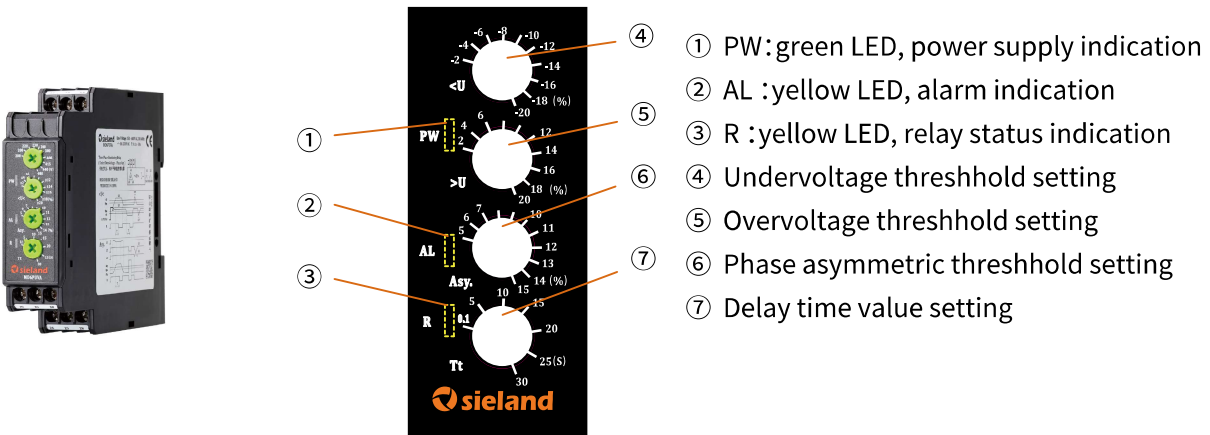


MD6PUVA-X 100V Three-phase monitoring relay specification



Products features:

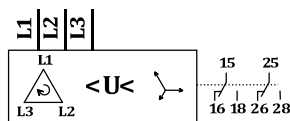
- Monitoring self-power supply
- Phase sequence / absence, undervoltage, overvoltage, phase unbalance
- Line voltage benchmark : 100V
- Off delay mode

Technical data:

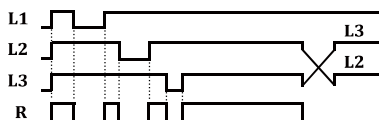
Rated voltage:	75 - 300V AC , 50/60 Hz (line voltage)
Undervoltage:	-2% ... -20% (line voltage)
Overvoltage:	2% ... 20% (line voltage)
Asymmetry:	5% ... 15%
Time delay:	0.1s - 30s
Relay output:	2 c/o
Repeatability:	±0.5%
Temperature drift:	±0.05%/°C
Voltage drift:	±1%/V
Contact rating:	8A/250VAC
Electrical durability:	10 ⁵ cycles
Mechanical durability:	10 ⁷ cycles
IP degree:	IP50/IP20
Operation temperature:	-40°C...60°C
Storage temperature:	-40°C...85°C
Width:	22.5 mm
Height:	92 mm
Length:	100 mm
Mounting:	35mm DIN rail
Standards:	IEC60255-1, GB14048.5

Reference figure for MD6PUVA-X 100V:

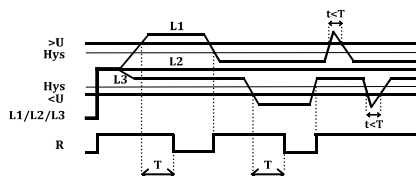
T: 0.1s-30s
Line voltage: 75-300V AC , 50/60 Hz
— : 8A 250V AC



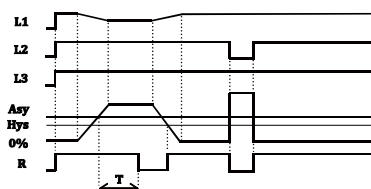
Phase sequence / absence function:



Under-/overvoltage function:



Phase unbalance function:



Example:

■ Protection for line voltage benchmark 100V equipment

Setting:

<U: -15%
 >U: 10%
 Asy.: 15%
 Tt: 5s

Accordingly:

<U threshold: $100 - 100 \cdot 15\% = 85V$
 >U threshold: $100 + 100 \cdot 10\% = 110V$
 Asy. threshold: $100 \cdot 15\% = 15V$

Conclusion:

When voltage is between 85V and 110V, voltage is normal, relay c/o switch on, led R turn on, led AL turn off

When voltage is over 110V, overvoltage fault occur, if the fault last for 5s, relay c/o switch off, led R turn off, led AL fast flash

When voltage is under 85V, undervoltage fault occur, if the fault last for 5s, relay c/o switch off, led R turn off, led AL slow flash

When asymmetric is over 15V, phase unbalance fault occur, if the fault last for 5s, relay c/o switch off, led R turn off, led AL slow flash

When phase sequence/phase loss fault occur, relay c/o switch off immediately, led R turn off, led AL turn on